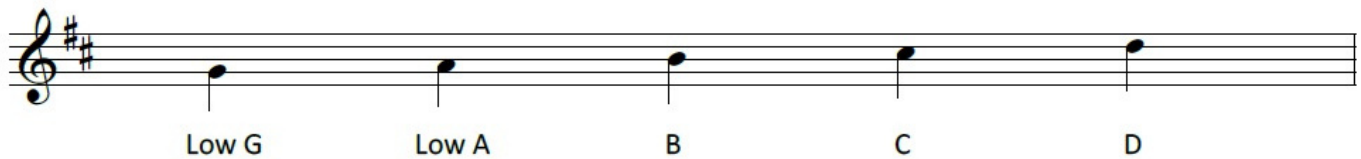


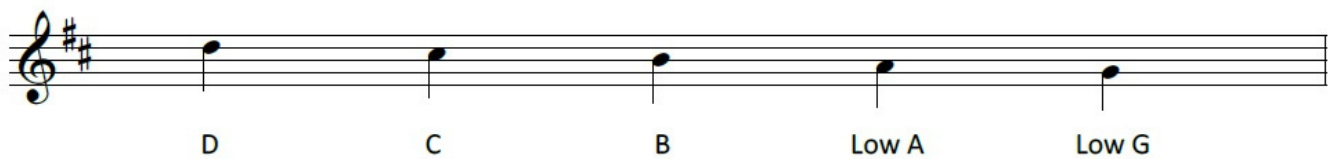
# Bytesize Bagpipes

## Lesson 2 - Bottom Hand Scale

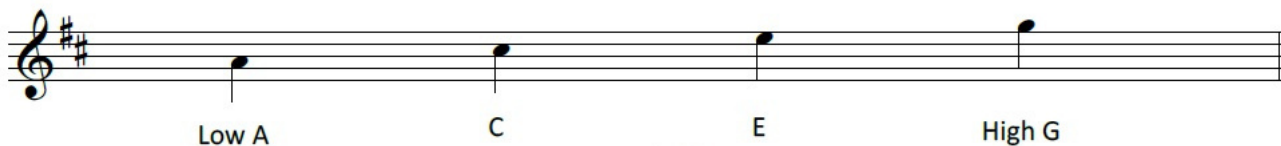
### Challenge 1: Up The Bottom Hand Scale



### Challenge 2: Down The Bottom Hand Scale

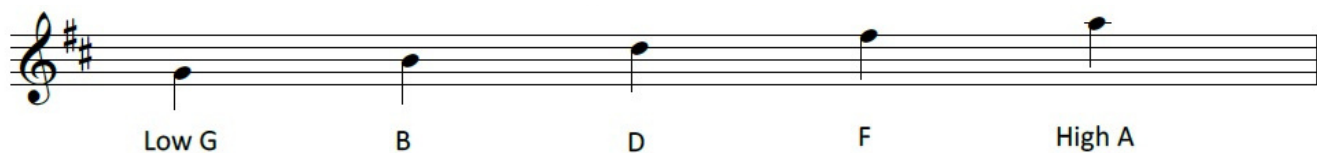


### Challenge 3: Notes in the Space



Remember: All      Cows      Eat      Grass

### Challenge 4: Notes on the Lines



Remember: Good      Boys      Deserve      Fun      Always

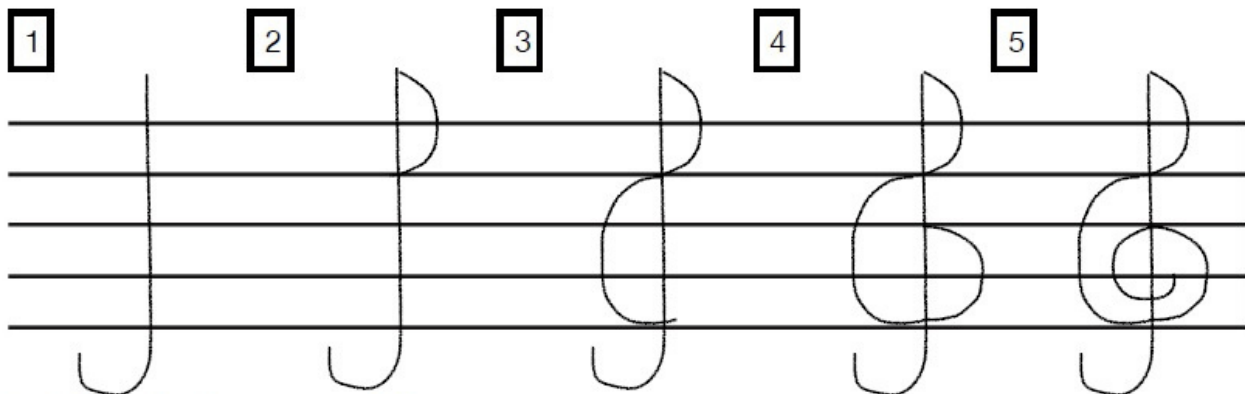
# Bytesize Bagpipes

## Lesson 2 - Bottom Hand Scale

### Challenge 5: How to Draw A Treble Clef

The word **treble** means *high*. We use a symbol called a **treble clef** to write the high notes on the staff. Sometimes it's called the "G clef" because it circles around the G-line.

1. To draw a treble clef. First we will draw a **VERY TALL J**.
2. Then draw a **Capital D** from the top of the J to touch line 4.
3. Then draw a **BIG C**, from line 4 to touch the "tall J" at line 1.
4. Draw another **BIG Capital D** from the bottom of line 1 to touch line 3.
5. Then curl a **little C** around line 2.



Practice drawing some of your own.

---

---

---

---

---

---

---

---

---

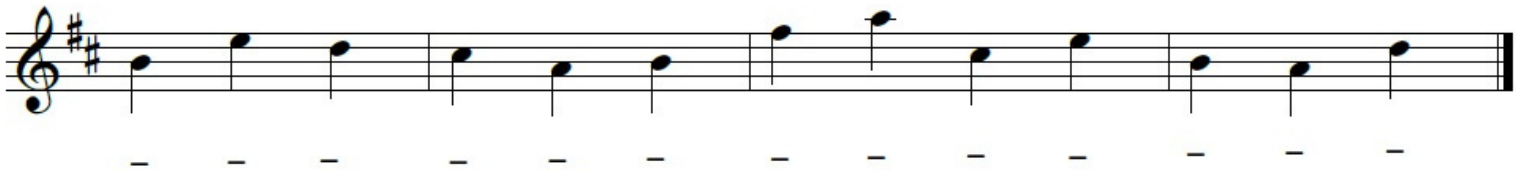
---

# Bytesize Bagpipes

## Lesson 2 - Bottom Hand Scale

### Challenge 6: Decoding Game

Write the notes underneath the notes to unlock the words



### Challenge 7: Make your own words

Make your own words and draw the notes on the stave here.  
Don't forget to add a treble clef at the start!

Two blank musical staves, each consisting of five horizontal lines, provided for drawing notes.

# Bytesize Bagpipes

## Lesson 2 - Bottom Hand Scale

### Challenge 5: Decoding Game - ANSWER SHEET

A musical staff in G major (one sharp) showing a bottom hand scale. The notes are: G4, A4, B4, C5, B4, A4, G4, F#4, E4, D4, C4, B3, A3, G3. The words BED, CAB, FACE, and BAD are written below the notes, corresponding to the notes B4, E4, D4, C4, A3, B3, F#4, E4, G4, A4, C5, B4, and G4.

**B E D      C A B      F A C E      B A D**